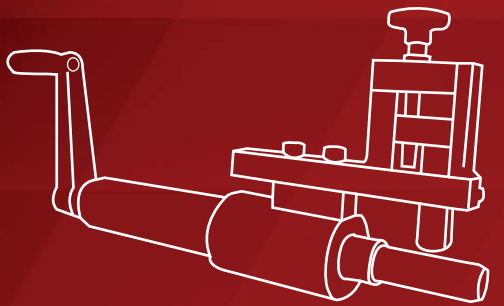
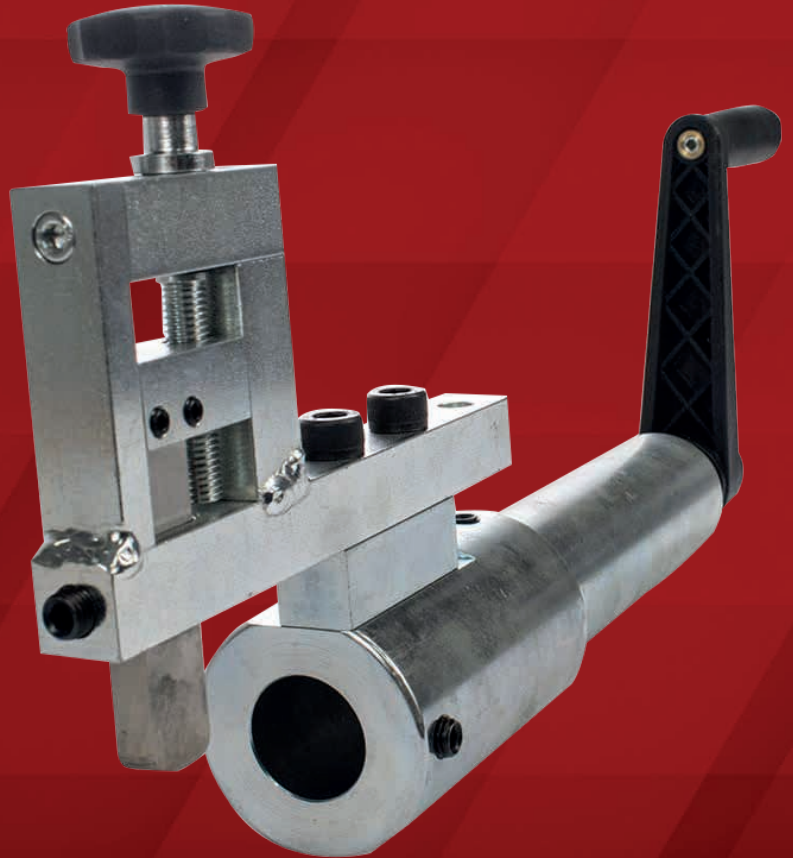


NF-SK10

Manual skiving machine with a long blade. The machine has a mounting bracket. Galvanized coating. Made in Europe.



500 mm



TECHNICAL SPECIFICATIONS

| | | |
|-----------------|--|-----------|
| MODEL | NF-SK10 | |
| DIMENSIONS | 500 mm | |
| WEIGHT | 7 kg | |
| HOSE DIMENSIONS | External | 1/4" - 2" |
| | Internal | 3/4" - 2" |
| ACCESSORIES | 10 mandrels are included for external skiving 1/4"- 2" Mandrels for internal skiving 3/4"- 2" are sold separately | |